



# **STABLE EDGE<sup>®</sup>**

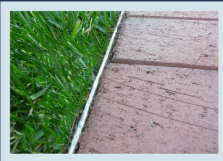
**ALUMINUM PAVER RESTRAINT**



For Keeping . . .



Concrete Pavers...



Clay Pavers...



Travertine Pavers...



or Natural Stone...

. . . In Place.

Curv-Rite® and Stable Edge® are registered trademarks of Curv-Rite, Inc.

- **Flexible**
- **Will Not Rust**
- **Durable**
- **Reversible**

*Ideal Restraint for:*

- Entryways
- Walkways
- Pathways
- Patios
- Driveways
- Courtyards
- Cartpaths
- And more

***STABLE EDGE®*** is made of an aerospace grade aluminum alloy that will never rust like steel or warp like plastic restraints.

*"We choose Stable Edge because it is versatile and durable and it works great for curves or straight runs."*

*-Jeff Rand*

*Rand Stoneworks,*



Available in  
Mill Finish  
and Black

Curv-Rite®, Inc.  
Wayland, MI USA  
800-366-2878  
www.curv-rite.com

Copyright © 2009 Curv-Rite, Inc.